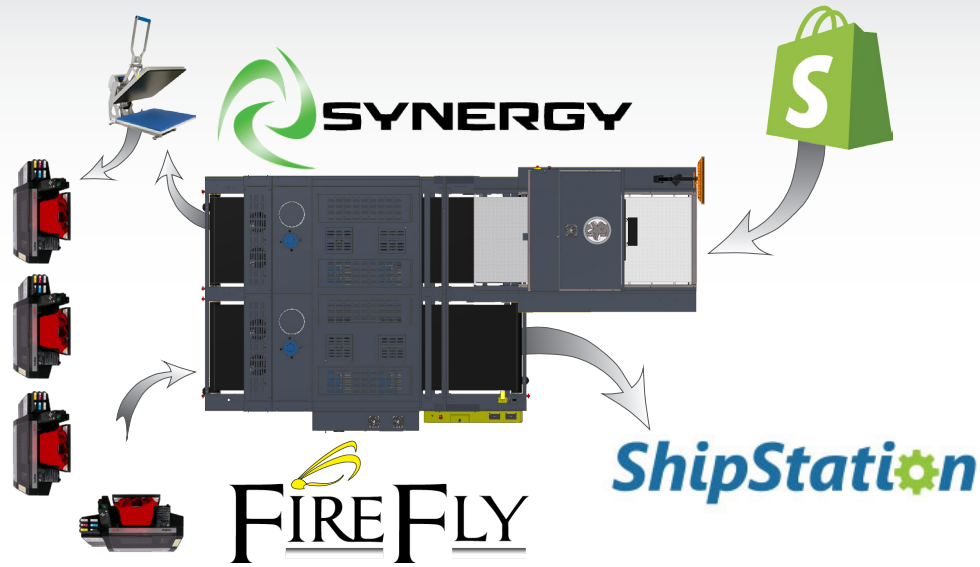


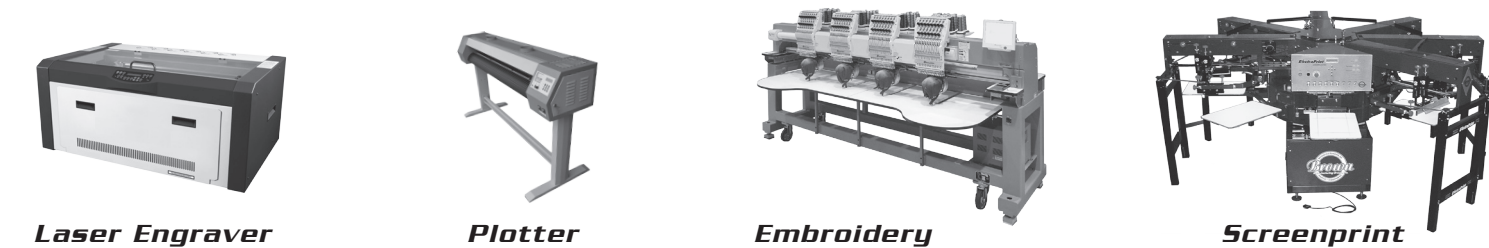
# Typical system configuration



- Orders placed within your store are pulled directly into Linx
- Production specifications are parsed and connected to a bar code
- Bar codes are scanned at all stations; Art department, Synergy pretreat, DTG print, FireFly cure, Quality control
- Artwork is mapped to orders with placement and size specifications based upon order information
- Purchasing sorts orders by product information for inventory management
- Linx generates shipping labels through ShipStation® and alerts customers of tracking information



# Other production control applications



FireFly is a trademark of Brown Manufacturing Group, Inc. 2014  
 Synergy is a trademark of Brown Manufacturing Group, Inc. 2016  
 Linx is a trademark of Brown Manufacturing Group, Inc. 2016  
 ShipStation® registered trademark  
 Shopify® registered trademark  
 ebay® registered trademark  
 Etsy® is a registered trademark  
 Amazon® is a registered trademark

**BrownDigital** a division of  
**Brown Manufacturing Group, Inc.**  
 4661 Stafford Ave. S.W.  
 Wyoming, MI 49548  
 616-249-0200  
 www.brownmfg.net



www.brownmfgdigital.com

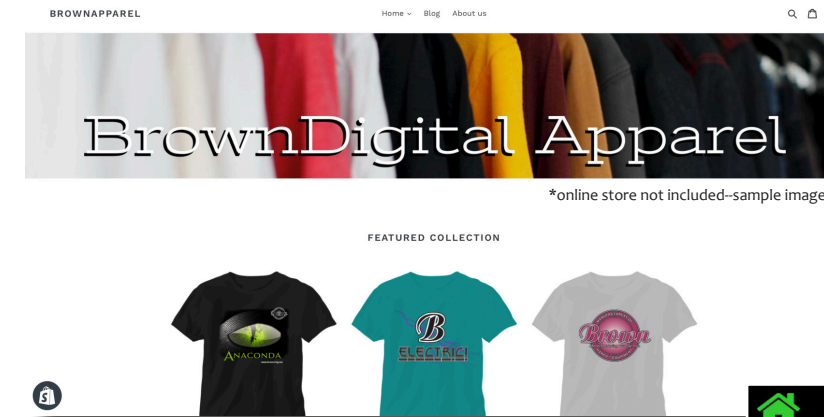


# linx

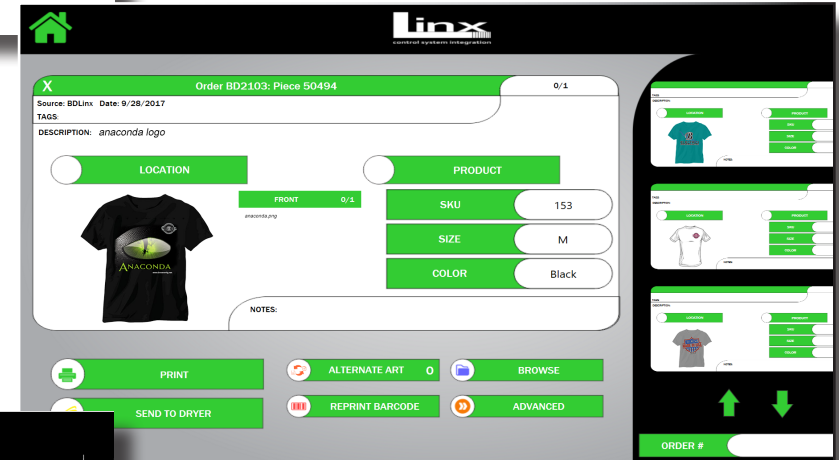
control system integration

## on demand printing solution

From your online store\*



To your production machine



To your shipping system



**Brown**  
**DIGITAL**  
 industrial strength in the digital world  
 www.brownmfgdigital.com



# Linx

control system integration

Linx Control System Integration software integrates your web shopping cart, phone and walk-in orders directly to your production and pushes it into your shipping application. Linx gives tracking and production control on one barcode and through one integrated system.

Full product information is pulled from your orders and parsed into data that is useful for specific tasks. The product type, size, color and SKU are separated for use by production control and purchasing. Artwork is automatically converted to required formats and mapped to print location and size. Pretreat, print and cure requirements are connected using a Rules Engine that is fully controlled by you. Orders with multiple items are tracked together so that when partials are finished the order is held until all products become available. The final order is pushed into your shipping application to deliver to your customer.

All of these features are tracked by the barcode that is created by Linx and kept with the product. A simple scan at your DTG printer, or any other production station, and all of the production parameters for that job are used to drive that station's production. This information can include the number of base white layers as well as the size and location for the print, the type of pretreat, the pretreat cure, the ink cure and much more.

Linx Control System Integration is the one production management software for your entire system.



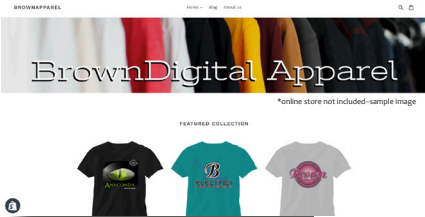
## Order entry and tracking



- Order capture from Shopify® or Amazon® or order capture from any open API source
- Manual order entry
- Group order information using your defined views
- SKU or product mapping using your defined automation
- Combine multiple stores into one production control center



From your online store\*



Order Details



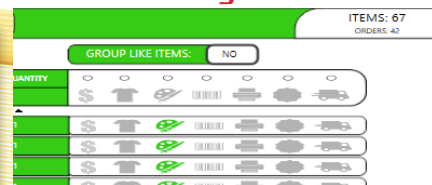
## Art and Product control



- Linx System Integration server system
- Global access to Google Drive and Amazon Buckets
- Barcode creation and tracking
- Art file automation to size and print location
- Production mapping of artwork to product
- Production path requirements defined
- Control any product and their requirements within one system



Tracking Screen zoom in



## Production Paths



- Synergy™ pretreat system connection
- DTG printer connection -- Brother® or Kornit® and others
- Control all product production -- including non-printed or alternate production needs
- FireFly™ curing system
- Barcode can include production requirements for units produced in any area of your facility

DTG Rules Engine Profile Screen



Production Rules Engine



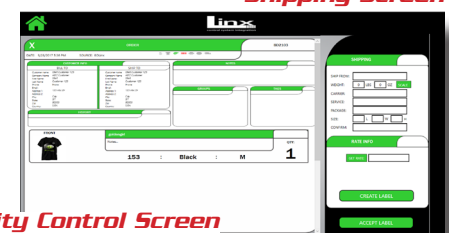
## QC and Shipping



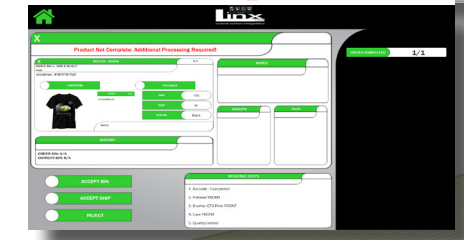
- Connection to ShipStation®, XPS Shipper and other open API shipping applications
- Binning system tracks incomplete orders
- Binning system alert when orders are complete
- Alerts for orders with special processing
- Products with multiple print locations are tracked
- A rejected product creates a new barcode and the order is returned to production



Shipping Screen



Quality Control Screen



**Brown Manufacturing Group, Inc.**

4661 Stafford Ave SW  
Wyoming, MI 49548  
616-249-0200

